

SHREK - The Musical' - production/role information

Dates: Music rehearsals: Late Sept-Dec
(Monday evenings)

Floor/dance rehearsals: Jan-Apr

(Mon, Weds, Fri eves and alternate Sun afternoon)

Performances: 21-25 April 2020, Hull New Theatre with a Saturday matinee

Performance style: The show is closely based on the first 'Shrek' film - and as such we have to respect audiences' expectations of how they imagine the characters to be - whilst breathing life into the characters by not making them a slavish copy of the film. This 'comic fairytale' suits performers who can give strong, characterful performances - but this is NOT a pantomime - there needs to be truth and believability in the performances.

Warning re costume: The company from whom we are hiring costumes for the show have placed size restrictions on some roles. Please see character outlines for where this applies. Also - Expect to be HOT! - lol To create the look of the characters the ogres will wear prosthetics, most performers will have some kind of character makeup, and many roles have costumes made of several layers and/or fur (including padding for some).

Please see the following pages for character/role breakdowns for the various parts in the show.....

Act I

Big Bright Beautiful World	Mamma & Pappa Shrek, King Harold, Queen Lillian, Chorus, Shrek
Story of My Life	Pinocchio and Fairytale Characters
The Goodbye Song	Fairytale Characters
Don't Let Me Go	Donkey
What's Up Duloc?	Lord Farquaad, Duloc Dancers and Chorus
I Know It's Today	Fiona, Young Fiona and Teen Fiona
Travel Song	Donkey and Shrek
Forever	Dragon and 'backup' Knights
This Is How Dreams Come True	Fiona
Who I'd Be	Shrek, with Fiona & Donkey

Act II

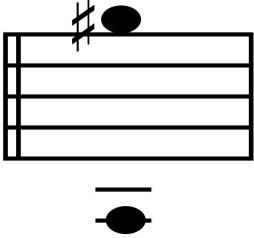
Morning Person	Fiona, Pied Piper and Rats (dancers)
I Think I Got You Beat	Fiona & Shrek
Ballad of Farquaad	Lord Farquaad
Make A Move	Donkey and 'backup' 3 Blind Mice
When Words Fail	Shrek
Build A Wall	Shrek
Freak Flag	Gingy/Sugar Plum and Fairytale Characters
Big Bright Beautiful Reprise	Shrek
Finale	Fiona, Shrek, Donkey and Fairytale Characters and Chorus
I'm A Believer	Full Cast

SHREK - The Musical' - production/role information

CHARACTER OUTLINES

Lead Characters

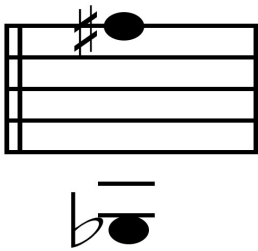
SHREK: (male - playing age 30s-40s).



An ogre. Excellent actor and singer with great comedy skills. Suited to a performer of large stature. Max 52" chest.

Abandoned as a child by his parents, and used to the hostile response from locals, he had to 'toughen up' and fend for himself. He is independent in spirit and life loving - and subsequently initially somewhat intolerant of his ideal life being disturbed. His 'grumpiness' is only superficial, revealing a highly likeable, and lovable character, who is somewhat afraid of opening up for fear of being hurt again. Audiences might expect a 'Scottish' twang to his accent - as per the film. Will require the wearing of prosthetic makeup.

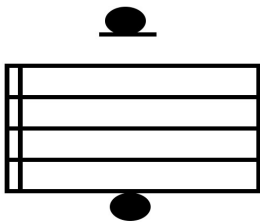
FIONA: (female - playing age 28).



A beautiful princess. Excellent actress and singer with great comedy skills. Tap dance skills an advantage. Max 38" bust, 32" waist.

Abandoned as a child by her parents she has been entertaining herself in an isolated tower and developed a somewhat 'quirky' character beneath the conventional 'princess' exterior she initially tries to portray. She can be outspoken, clumsy and wacky. Not averse to having a burping/farting competition with Shrek - which suits her sense of humour. Hoping for a conventional princess life - she is too unconventional to fill those shoes. Hides the secret of being 'an ogre' by night.

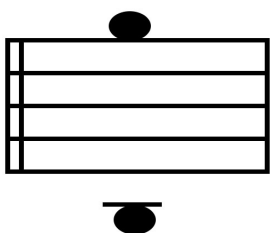
DONKEY: (male - playing age 20s-30s).



A talking, walking donkey. Excellent comedian with strong singing and a good 'mover'. Max 44" chest, 40" waist.

A lovable personality though sometimes annoyingly talkative. He wears his heart on his sleeve (whether that is fear, joy, love or annoyance), 'says it like it is' and never uses one word when he can use ten. An almost childlike need to find a friend, he becomes Shrek's loyal, optimistic side-kick and is unperturbed by the ogre's appearance. We are not limiting casting of this role to black performers.

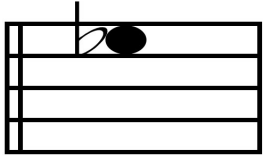
LORD FARQUAAD: (male - playing age 30s-40s).



A king 'in waiting' with classic 'small-man syndrome'. Excellent comedian with good character singing (and strong knees!). Max 46" chest

Desperate to marry so he can ascend the throne he is a power hungry dictator who has banished all the 'freaks' from Duloc. Unfortunately his dreams are undermined by being hilariously small, and neurotically temperamental. He hides that secret that he too is a 'freak' - with one of the seven dwarves as a father. The actor plays the whole performance on his knees (with 'fake dwarf legs').

DRAGON: (female - off stage).

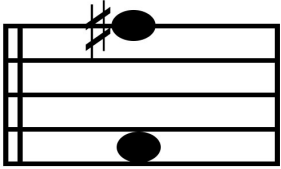


A dragon with a soulful voice. Excellent singer. The performer sings the song 'Forever' off stage whilst on stage puppeteers operate the dragon puppet to 'mime' to the sung voice. Powerful soul voice, transitioning from a threatening beast to a love-struck 'girlfriend' when she falls for donkey.

Potential for perhaps doubling with another character - Mama Shrek, fairytale?

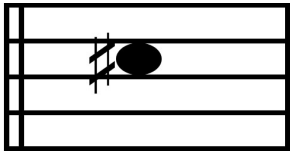


PINOCCHIO: (male - playing age 20s).



The 'wooden boy' from the classic fairytale - with a twist. Max 40" chest, 36" waist. Strong character actor and singer. Performs the whole role (song and dialogue) in a falsetto voice. Outspoken, stropky and frustrated - has a tendency to bend the truth at which point his nose grows. One of the characters in the 'fairytale characters' group.

GINGY: (female).



The ginger bread man. As in the movie gingy is tortured by Farquaad in a comic scene. The character is a puppet for which the performer provides the voice. It is possible that the performer will be offstage - miming to the puppet or could double with 'Sugar Plum Fairy' if the prop allows.. Appears in Act II and sings the opening of 'Freak Flag'.



OTHER FAIRYTALE CHARACTERS:

Our current thinking is that the following will remain as written - featured roles with some solo dialogue or singing. The roles will be cast to evenly distribute across all voice types (soprano, mezzo, alto, tenor, bariton, bass):

SUGAR PLUM FAIRY: (female) Russian accented 'ballerina' type. Sings verse of 'Freak Flag'. Max 40" bust.

3 PIGS: (male) Ability to sing 3 part harmony. German accents. Max 46" chest, waist or hips.

BIG BAD WOLF: (male) 'Big' but not 'bad'. Is cross-dressing in granny clothes. Max 46" chest.

WICKED WITCH: (female) not "wicked", but blunt, straight talking and 'no nonsense'. Max 48" bust.

HUMPTY DUMPTY: (female) An egg. Sings a big riff in 'Freak Flag'. Max 48" bust/hip

MAMMA BEAR: (female) of 'Goldilocks fame' - kindly but assertive. Max 48" chest.

FAIRY GODMOTHER: (female) quirky, beumused and bespecktaced. Max 48" chest/hip/waist

WHITE RABBIT: (male) Always late. For a very important date. Max 42" chest.

PETER PAN: (male) Naively believes h'es an eternal boy - but is 34 and needs a shave. Max 38" chest

UGLY DUCKLING: (female) classic runt of the litter. Max 48" chest.

Due to mic limitations we will be redistributing some lines so that remaining named Fairytale Characters will no longer have individual lines - but will still be part of the Fairytale Character songs/scenes. Pappa Bear (Max 48" chest) Baby Bear (Max 36" chest, 30" waist), Mad Hatter (Max 42" chest), Elf etc. Dependent on costuming we hope to expand the fairytales group with other characters.

OTHER ROLES: (male and female).

THREE BLIND MICE: (female)

Harmony onstage back-up singers for Donkey in 'Make a Move'. Could double into other roles. Max 46" bust/hip

KNIGHTS: (male)

Harmony onstage back-up singers for Dragon in 'Forever'. Comic. Could double into other roles e.g guards.

GUARDS AND CAPTAIN OF THE GUARD: (male)

Speaking roles. Captain max 44" chest, 38" waist.

CHORUS and DANCERS: (male and female).

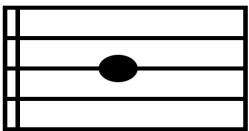
Chorus appear in the opening song 'Big Bright Beautiful World' singing as 'happy people', in the Duloc song and in the Final Scene. Max 50" chest/bust, 46" waist.

They may well be used in other scenes as pupeteers etc.

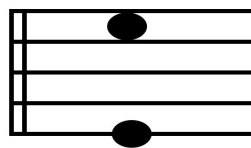
Dancers will perform in Duloc and as 'Rat tappers' in 'Morning Person'.

Duloc dancers Max 44" chest, 42" bust.

MAMA SHREK: (female - 30s-40s).

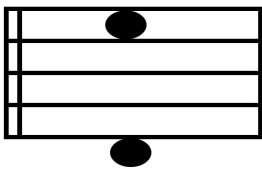


PAPPA SHREK: (female - 30s-40s).

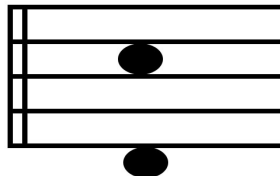


Shrek's mum and dad - ogres. Max 48" chest/bust. Good singer with comedy ability. Appear only in the opening song when they sing as his parents - sending him away from home at age 7. The song is shorter than on the Broadway CD. Could potentially double into chorus/other role when time permits the performer to remove their green makeup e.g. Mama doubling as Dragon.

KING HAROLD (male - 30s-40s).



QUEEN LILLIAN (female - 30s-40s).



Young fiona's mum and dad - royalty. Good singer. Ma 48" chest/bust. Appear very briefly only in the opening song when they sing a couple of lines as her parents when banishing her to a tower at age 7. Kind and benevolent in appearance - blissfully unaware that what they are doing has any negative connotations. Could potentially double into chorus/other role if change of make-up permits.

Roles to be cast at a future date:

YOUNG FIONA: (female - playing age 7).

Excellent singer, and actress able to sing harmony. Appears in 'I Know It's Today'

TEEN FIONA: (female - playing age, young teenager).

Excellent singer, and actress able to sing harmony. Appears in 'I Know It's Today'

YOUNG SHREK: (male - playing age 7).

Good actor - non-speaking/singing role. Brief appearance in first song.